

遠東包裝工業私人有限公司
 FAR EAST PACKAGING INDUSTRIAL PTE. LTD.
 Co. Reg. No: 197602191G

18/20, SENOKO LOOP, WOODLANDS EAST INDUSTRIAL ESTATE, SINGAPORE 758152.

YOUR PROOF
 Please check carefully,
 sign and return

RECEIVED
 By Leslie Roberts at 10:11 am, Oct 11, 2007



W 240 mm x H 130 mm **OUTER**

Date: 31.10.07
 Sig: *London*

HOW TO PREPARE: SHAKE WELL BEFORE USE

1. Removed childproof cap from top of bottle.
2. Half fill spray tank with water.
3. Mix in the required amount of Carbaryl Insecticide and add the rest of water. Mix well.

RESTRAINTS: DO NOT apply to food producing plants.

PRECAUTION: Avoid bare skin contact with treated surfaces for 7 days.

CAUTION: DO NOT allow chemical containers to get into drains, sewers or ponds. Dangerous to bees, do not spray plants while bees are foraging. Dangerous to fish.

STORAGE & DISPOSAL: Store in closed original container in a cool, dry place out of reach of children. Do not store in direct sunlight. Dispose of empty container by wrapping in paper, placing in plastic bag and putting in garbage.

SAFETY DIRECTIONS: Product is poisonous if absorbed by skin contact, inhaled or swallowed. May irritate the eyes, nose, throat and skin. Avoid contact with eyes and skin. Do not inhale spray mist. When opening the container, preparing spray and using the prepared spray, wear cotton overalls buttoned to the neck and wrists (or equivalent clothing) and rubber gloves. If product on skin, immediately wash area with soap and water. After use and before eating, drinking or smoking, wash hands, arms and face thoroughly with soap and water. After each day's use, wash gloves and contaminated clothing.

FIRST AID: If poisoning occurs, contact a doctor or Poisons Information Centre.
 Phone Australia 13 11 26.

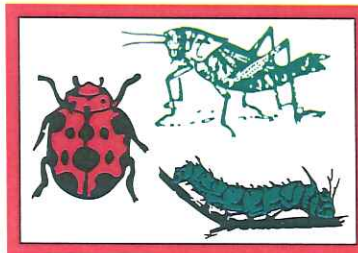
HOW TO USE: DO NOT apply to food producing plants. DO NOT mix with Lime Sulphur or Bordeaux mixture. DO NOT apply in hot or humid conditions, or when plants are dry and suffering from moisture stress. DO NOT apply if rain is expected within 24 hours.

SITUATION	PEST	RATE	HOW TO APPLY
Ornamentals	Caterpillars (including budworm and looper), Leaf Rollers, Leaf Hoppers, Lace Bugs, Harlequin Bugs, Cabbage White Butterfly, Pumpkin Beetle, Potato Moth, Tomato Caterpillar, Cutworms, Rutherglen bugs, Wingless grasshoppers (not NSW), Leaf eating Ladybird (not Tas).	10mL/L water	Spray when insects appear and repeat as required.
Elm trees in non-crop situations	Elm leaf beetle (Vic only) NB: These treatments will not eradicate Elm Leaf Beetle, but will protect the tree from serious defoliation.	200mL/L water	Bark band treatment: Apply to trunk in December when larvae are first observed on leaves. Apply in a half metre wide band around trunk at >1.5m. On large trees, also spray upper surface of the branches where they meet the trunk.
		10mL/L water	Foliar Spray for small trees: Apply to the foliage and repeat as required.
Outdoor areas -General	European Earwings, Portuguese Millipedes	10mL/L water	Spray liberally on walls, paths and fences.
Lawns	Black-headed Cockchafers, Lawn Grub (NSW, ACT, QLD only)	Garden sprayer: Mix 200mL in 10L water and spray evenly over 65m ² .	1. Lightly water lawn. 2. Apply Carbaryl. 3. Water in thoroughly
	Armyworms (Vic, SA, NSW, WA, ACT only), B u d w o r m (Helicoverpa) (Vic, SA, WA only)	Watering can: Mix 25mL in 10L of water and apply evenly over 8m ² .	1. Lightly water lawn. 2. Apply Carbaryl (for best results apply in late afternoon)

NOT TO BE USED FOR ANY PURPOSE OR IN ANY MANNER CONTRARY TO THIS LABEL UNLESS AUTHORISED

CAUTION
 KEEP OUT OF REACH OF CHILDREN
 READ SAFETY DIRECTIONS BEFORE OPENING OR USING
DAVID GRAYS
CARBARYL
GARDEN
INSECTICIDE

ACTIVE CONSTITUENT:
100 g/L CARBARYL (an anticholinesterase compound)
 Controls caterpillars, grasshoppers and other chewing insects on garden plants, lawns and other outdoor areas.
 The bottle must not be sold separately. Do not destroy box while product still remains.

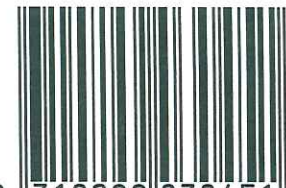


200mL

Batch No:

Date of Manufacture

APVMA Approval Number 61190/200MLC/0707 APN:



9 310299 030451



DAVID GRAY & CO. PTY. LTD.
 2 RAWLINSON STREET,
 O'CONNOR WA 6163
 Phone: (08) 9337 4933
 www.davidgray.com.au



Guide lines only will not appear on printing

Important: This is your original manuscript, any additional changes will incur a nominal charge. before signing this proof check that the PLU Code or Bar Code correctly matches the variety. While utmost care is taken that this artwork is correct, any errors or spelling mistakes overlooked now become the customers, responsibility. Your signed approval provides Far East Packaging with the authority to print your order as per attached proof. All original artwork created by Far East Packaging remains the property of Far East Packaging unless expressed otherwise.

Company: _____ Attn: _____
 Job No: _____ Proofs OK - Signed _____ Date: _____

RECEIVED

By Leslie Roberts at 10:05 am, Oct 11, 2007



遠東包裝工業有限公司
FAR EAST PACKAGING INDUSTRIAL PTE. LTD.
Co. Reg. No: 197602191G

18/20, SENOKO LOOP, WOODLANDS EAST INDUSTRIAL ESTATE, SINGAPORE 758152.

YOUR PROOF
Please check carefully,
sign and return

W 240 mm x H 130 mm **BOTTLE**

RESTRAINTS: DO NOT apply to food producing plants.

PRECAUTIONS: Avoid bare skin contact with treated surfaces for 7 days.

CAUTION: DO NOT allow chemical containers to get into drains, sewers or ponds. Dangerous to bees, do not spray plants while bees are foraging. Dangerous to fish.

HOW TO USE: DO NOT mix with Lime Sulphur of Bordeaux mixture. DO NOT apply in hot or humid conditions, or when plants are dry and suffering from moisture stress. DO NOT apply if rain is expected within 24 hours.

STORAGE & DISPOSAL: Store in closed original container in a cool, dry place out of reach of children. Do not store in direct sunlight. Dispose of empty container by wrapping in paper, placing in plastic bag and putting in garbage.

SAFETY DIRECTIONS: Product is poisonous if absorbed by skin contact, inhaled or swallowed. May irritate the eyes, nose, throat and skin. Avoid contact with eyes and skin. Do not inhale spray mist. When opening the container, preparing spray and using the prepared spray, wear cotton overalls buttoned to the neck and wrist (or equivalent clothing) and rubber gloves. If product on skin, immediately wash area with soap and water. After use and before eating, drinking or smoking, wash hands, arms and face thoroughly with soap and water. After each day's use, wash gloves and contaminated clothing.

FIRST AID: If poisoning occurs, contact a doctor or Poisons Information Centre. Phone Australia 13 11 26.

CAUTION
KEEP OUT OF REACH
OF CHILDREN
READ SAFETY DIRECTIONS
BEFORE OPENING OR USING
DAVID GRAYS
CARBARYL
GARDEN
INSECTICIDE

ACTIVE CONSTITUENT:
100 g/L CARBARYL (an anticholinesterase compound)

Controls caterpillars, grasshoppers and other chewing insects on garden plants, lawns and other outdoor areas. Before using product, read directions on outer pack. Sale of this bottle except in outer pack is illegal.

200mL



Date: 31/10/07
Sig: Chondan

Batch Number:

Date of Manufacture:

DAVID GRAY & CO. PTY. LTD.
2 RAWLINSON STREET, O'CONNOR WA 6163
Phone: (08) 9337 4933
www.davidgray.com.au
APVMA Approval Number 61190/200ML/0707

APN:

Important: This is your original manuscript, any additional changes will incur a nominal charge. before signing this proof check that the PLU Code or Bar Code correctly matches the variety. While utmost care is taken that this artwork is correct, any errors or spelling mistakes overlooked now become the customers, responsibility. Your signed approval provides Far East Packaging with the authority to print your order as per attached proof. All original artwork created by Far East Packaging remains the property of Far East Packaging unless expressed otherwise.

Company: _____ Attn: _____
Job No: _____ Proofs OK - Signed _____ Date: _____

RECEIVED
By Leslie Roberts at 10:10 am, Oct 11, 2007



Far East Packaging Industrial Pte. Ltd.
Co. Reg. No: 197602191G

18/20, SENOKO LOOP, WOODLANDS EAST INDUSTRIAL ESTATE, SINGAPORE 758152.

YOUR PROOF
Please check carefully,
sign and return

W 284 mm x H 183 mm **OUTER**

HOW TO PREPARE: SHAKE WELL BEFORE USE
1. Removed childproof cap from top of bottle.
2. Half fill spray tank with water.
3. Mix in the required amount of Carbaryl Insecticide and add the rest of water. Mix well.

RESTRAINTS: DO NOT apply to food producing plants.

PRECAUTION: Avoid bare skin contact with treated surfaces for 7 days.

CAUTION: DO NOT allow chemical containers to get into drains, sewers or ponds. Dangerous to bees, do not spray plants while bees are foraging. Dangerous to fish.

STORAGE & DISPOSAL: Store in closed original container in a cool, dry place out of reach of children. Do not store in direct sunlight. Dispose of empty container by wrapping in paper, placing in plastic bag and putting in garbage.

SAFETY DIRECTIONS: Product is poisonous if absorbed by skin contact, inhaled or swallowed. May irritate the eyes, nose, throat and skin. Avoid contact with eyes and skin. Do not inhale spray mist. When opening the container, preparing spray and using the prepared spray, wear cotton overalls buttoned to the neck and wrists (or equivalent clothing) and rubber gloves. If product on skin, immediately wash area with soap and water. After use and before eating, drinking or smoking, wash hands, arms and face thoroughly with soap and water. After each day's use, wash gloves and contaminated clothing.

FIRST AID: If poisoning occurs, contact a doctor or Poisons Information Centre. Phone Australia 13 11 26.

HOW TO USE: DO NOT apply to food producing plants. **DO NOT** mix with Lime Sulphur of Bordeaux mixture. **DO NOT** apply in hot or humid conditions, or when plants are dry and suffering from moisture stress. **DO NOT** apply if rain is expected within 24 hours.

SITUATION	PEST	RATE	HOW TO APPLY
Ornamentals	Caterpillars (including budworm and loopers), Leaf Rollers, Leaf Hoppers, Lace Bugs, Harlequin Bugs, Cabbage White Butterfly, Pumpkin Beetle, Potato Moth, Tomato Caterpillar, Cutworms, Rutherglen bugs, Wingless grasshoppers (not NSW), Leaf eating Ladybird (not Tas).	10mL/L water	Spray when insects appear and repeat as required.
Elm trees in non-crop situations	Elm leaf beetle (Vic only) NB: These treatments will not eradicate Elm Leaf Beetle, but will protect the tree from serious defoliation.	200mL/L water	Bark band treatment: Apply to trunk in December when larvae are first observed on leaves. Apply in a half metre wide band around trunk at >1.5m. On large trees, also spray upper surface of the branches where they meet the trunk.
		10mL/L water	Foliar Spray for small trees: Apply to the foliage and repeat as required.
Outdoor areas - General	European Earwings, Portuguese Millipedes	10mL/L water	Spray liberally on walls, paths and fences.
Lawns	Black-headed Cockchafers, Lawn Grub (NSW, ACT, QLD only)	Garden sprayer: Mix 200ml in 10L water and spray evenly over 65m ² .	1. Lightly water lawn. 2. Apply Carbaryl. 3. Water in thoroughly.
	Armyworms (Vic, SA, NSW, WA, ACT only), Budworm (Helicoverpa) (Vic, SA, WA only)	Watering can: Mix 25mL in 10L of water and apply evenly over 8m ² .	1. Lightly water lawn. 2. Apply Carbaryl (for best results apply in late afternoon)

NOT TO BE USED FOR ANY PURPOSE OR IN ANY MANNER CONTRARY TO THIS LABEL UNLESS AUTHORISED

CAUTION
KEEP OUT OF REACH OF CHILDREN
READ SAFETY DIRECTIONS BEFORE OPENING OR USING

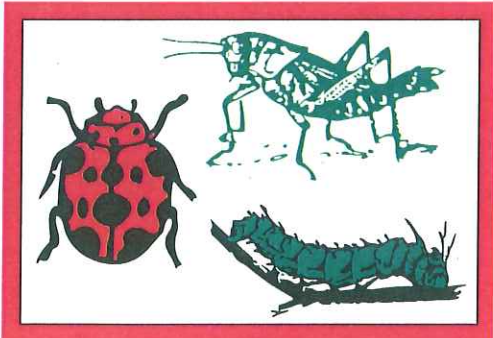
DAVID GRAYS

CARBARYL GARDEN INSECTICIDE

ACTIVE CONSTITUENT:
100 g/L CARBARYL (an anticholinesterase compound)

Controls caterpillars, grasshoppers and other chewing insects on garden plants, lawns and other outdoor areas.

The bottle must not be sold separately.
Do not destroy box while product still remains.



500mL



Date: 31.10.07
Sig: London

Batch No:
Date of Manufacture
APVMA Approval Number 61190/500MLC/0707 APN:



DAVID GRAY & CO. PTY. LTD.
2 RAWLINSON STREET,
O'CONNOR WA 6163
Phone: (08) 9337 4933
www.davidgray.com.au

Guide lines only will not appear on printing

Important: This is your original manuscript, any additional changes will incur a nominal charge. before signing this proof check that the PLU Code or Bar Code correctly matches the variety. While utmost care is taken that this artwork is correct, any errors or spelling mistakes overlooked now become the customers, responsibility. Your signed approval provides Far East Packaging with the authority to print your order as per attached proof. All original artwork created by Far East Packaging remains the property of Far East Packaging unless expressed otherwise.

Company: _____ Attn: _____
Job No: _____ Proofs OK - Signed _____ Date: _____

RECEIVED

By Leslie Roberts at 10:09 am, Oct 11, 2007

远包装工业私人有限公司



FAR EAST PACKAGING INDUSTRIAL PTE. LTD.

Co. Reg. No: 197602191G

18/20, SENOKO LOOP, WOODLANDS EAST INDUSTRIAL ESTATE, SINGAPORE 758152.

YOUR PROOF

Please check carefully,
sign and return

W 284 mm x H 183 mm **BOTTLE**

RESTRAINTS: DO NOT apply to food producing plants.

PRECAUTIONS: Avoid bare skin contact with treated surfaces for 7 days.

CAUTION: DO NOT allow chemical containers to get into drains, sewers or ponds. Dangerous to bees, do not spray plants while bees are foraging. Dangerous to fish.

HOW TO USE: DO NOT mix with Lime Sulphur of Bordeaux mixture. DO NOT apply in hot or humid conditions, or when plants are dry and suffering from moisture stress. DO NOT apply if rain is expected within 24 hours.

STORAGE & DISPOSAL: Store in closed original container in a cool, dry place out of reach of children. Do not store in direct sunlight. Dispose of empty container by wrapping in paper, placing in plastic bag and putting in garbage.

SAFETY DIRECTIONS: Product is poisonous if absorbed by skin contact, inhaled or swallowed. May irritate the eyes, nose, throat and skin. Avoid contact with eyes and skin. Do not inhale spray mist. When opening the container, preparing spray and using the prepared spray, wear cotton overalls buttoned to the neck and wrist (or equivalent clothing) and rubber gloves. If product on skin, immediately wash area with soap and water. After use and before eating, drinking or smoking, wash hands, arms and face thoroughly with soap and water. After each day's use, wash gloves and contaminated clothing.

FIRST AID: If poisoning occurs, contact a doctor or Poisons Information Centre. Phone Australia 13 11 26.

CAUTION
KEEP OUT OF REACH
OF CHILDREN
READ SAFETY DIRECTIONS
BEFORE OPENING OR USING

DAVID GRAYS
CARBARYL
GARDEN
INSECTICIDE

ACTIVE CONSTITUENT:
100 g/L CARBARYL (an anticholinesterase compound)

Controls caterpillars, grasshoppers and other chewing insects on garden plants, lawns and other outdoor areas.
Before using product, read directions on outer pack. Sale of this bottle except in outer pack is illegal.

500mL



Date: 31.10.07

Sig: *London*

Batch Number:

Date of Manufacture:

DAVID GRAY & CO. PTY. LTD.
2 RAWLINSON STREET, O'CONNOR WA 6163
Phone: (08) 9337 4933
www.davidgray.com.au
APVMA Approval Number 61190/500ML/0707

APN:

Important: This is your original manuscript, any additional changes will incur a nominal charge. before signing this proof check that the PLU Code or Bar Code correctly matches the variety. While utmost care is taken that this artwork is correct, any errors or spelling mistakes overlooked now become the customers, responsibility. Your signed approval provides Far East Packaging with the authority to print your order as per attached proof. All original artwork created by Far East Packaging remains the property of Far East Packaging unless expressed otherwise.

Company: _____ Attn: _____
Job No: _____ Proofs OK - Signed _____ Date: _____